

12th iOM' 19

International Olympiad of Mathematics



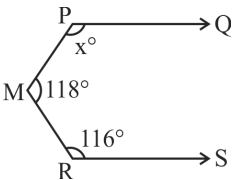
Organized by:

Silverzone Foundation
New Delhi, India

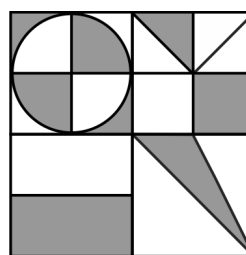
For supremacy in Mathematics
www.silverzone.org

CLASS : 7 SAMPLE QUESTIONS

The Actual Question Paper Contains 50 Questions. The Duration of the Test Paper is 60 Minutes.

- The product of the given 11 fractions is:
 $\left(1 - \frac{1}{3}\right)\left(1 - \frac{1}{4}\right)\left(1 - \frac{1}{5}\right)\left(1 - \frac{1}{6}\right)\dots\dots\dots\left(1 - \frac{1}{13}\right)$
 (A) $\frac{1}{13}$ (B) $\frac{16}{13}$ (C) $\frac{2}{13}$ (D) $\frac{12}{13}$
- What is the least number which when divided by 6, 9, 11 and 12 leaves remainder 5 in each case?
 (A) 401 (B) 391 (C) 396 (D) 408
- The value of $\frac{100^{97} + 100^{100}}{100^{97}} - 1$ is equal to:
 (A) 10^5 (B) 10^6 (C) 10^8 (D) 10^4
- If $x^2 + \frac{1}{x^2} = 6$, the value of $\left(x - \frac{1}{x}\right)$ is:
 (A) 4 (B) 1 (C) 2 (D) 3
- A student has to secure 33% marks to pass. He got 349 marks and failed by 47 marks. Find the maximum marks to be scored.
 (A) 1000 (B) 1200 (C) 1500 (D) 800
- In the given figure, it is given that $PQ \parallel RS$, $\angle MRS = 116^\circ$ and $\angle PMR = 118^\circ$. Determine the value of x .

 (A) 124 (B) 126 (C) 122 (D) 128
- If $A = \{1, 5, 6, 7, 8, 10\}$ and $B = \{2, 4, 6, 8\}$, then which one of the following statements is incorrect?
 (A) $A \cup B = \{1, 2, 4, 5, 6, 7, 8, 10\}$
 (B) $A \cap B = \{6, 8\}$
 (C) $A - B = \{1, 5, 7, 10\}$
 (D) $B - A = \{1, 2, 4, 10\}$

- Find the reciprocal of the fraction represented by the shaded parts in the given figure.



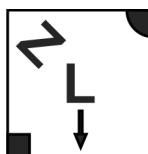
- (A) $\frac{32}{9}$ (B) $\frac{32}{11}$ (C) $\frac{32}{13}$ (D) $\frac{96}{41}$

- Which one of the following numbers will replace the question mark (?) in the number series given below?

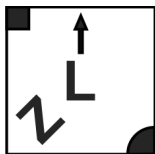
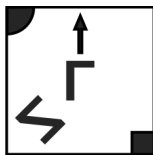
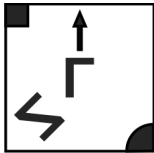
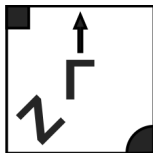
102, 96, 89, 81, 72, ?, 51

- (A) 63 (B) 61 (C) 60 (D) 62

- Find the water image of the given figure.



-----Water

- (A)  (B) 
- (C)  (D) 

ANSWERS

1. (C) 2. (A) 3. (B) 4. (C) 5. (B) 6. (B) 7. (D) 8. (C) 9. (D) 10. (C)